



**ALASKA DIVISION OF HOMELAND  
SECURITY & EMERGENCY  
MANAGEMENT**



**Daily Situation Report  
26-100 • April 10, 2026**

Toll-Free 1.800.478.2337

Anchorage Area 907.428.7000

SEOC 907.428.7100

<p><u>SEOC Preparedness Level</u> Level 1-Routine Operations</p>	<p align="center"><a href="http://ready.alaska.gov">http://ready.alaska.gov</a></p>	<p align="center"><u>Alaska Military Installation Force Protection Level:</u> FPCON Bravo</p>
<p align="center"><u>NTAS Bulletin</u> There are no current advisories</p> <p><a href="https://www.dhs.gov/national-terrorism-advisory-system">https://www.dhs.gov/national-terrorism-advisory-system</a></p>	<p align="center"><u>Maritime Security (MARSEC)</u> Level:1 Minimum Appropriate Security Measures</p>	

**(Significant changes from previous situation reports are red.)**

**Significant Issues:**

None

**2025 October West Coast Storm Disaster:**

**156** households/ **571** individuals transitioned from non-congregate shelters (hotels) to longer-term housing (apartments)

In Non-Congregate Shelter (hotels) Individuals:**36** Households:**8**

**Division of Homeland Security and Emergency Management Public Information:**

For current press releases, see:

<https://ready.alaska.gov/PublicInformation/PressReleases>

**Department of Health (DOH):**

For current information, see: <https://health.alaska.gov/en/>

**Travel Alerts and Conditions:**

For current driving conditions, dial 511 or visit: <https://511.alaska.gov/>

**Barry Arm Landslide / Tsunami Risk:**

For the latest information on the Barry Arm Landslide and Tsunami risk, click here:

<https://dggqs.alaska.gov/hazards/barry-arm-landslide.html>

**Earthquakes:**

United States Geological Service (USGS) Earthquake Information: [Earthquake Hazards Program | U.S. Geological Survey](#) - National Tsunami Warning Center: <https://tsunami.gov/>

**Alaska Volcanoes:**

Great Sitkin: Alert Level: Watch and Aviation Color Code: Orange  
Shishaldin: Alert Level: Advisory and Aviation Color Code: Yellow  
Atka Volcanic Complex Alert Level: Advisory and Aviation Code: Yellow  
For Alaska Volcano updates, go to: <https://www.avo.alaska.edu/>

**Air Quality Index (AQI) Advisories:**

For the most up-to-date Air Quality Index Advisories: <https://dec.alaska.gov/Applications/Air/airtoolsweb/Advisories>

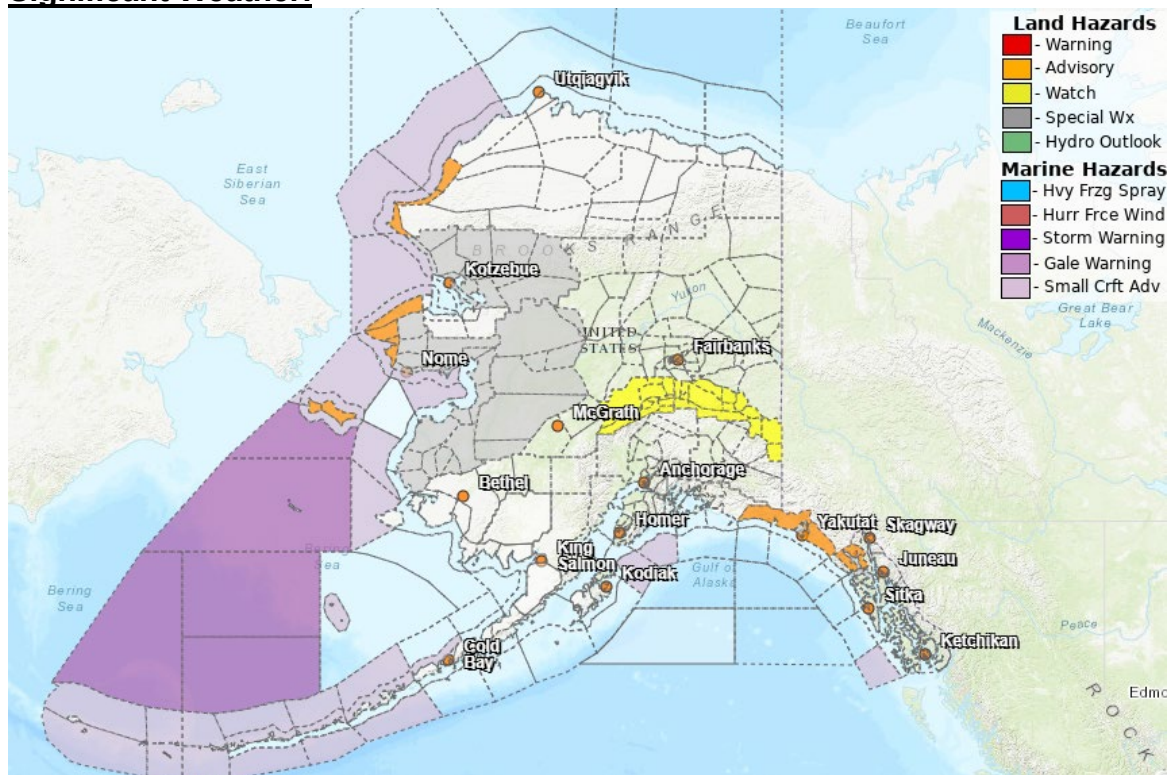
**Spills of Oil and Hazardous Substances:**

The Alaska Division of Environmental Conservation (ADEC) Spill Prevention and Response page is located at: <https://dec.alaska.gov/spar/ppr/spill-information/response/>

**Alaska Cyber Security Information:**

State Employees may sign up for cybersecurity notifications and alerts at: <https://oit-int.alaska.gov/security/>

**Significant Weather:**



**Special Weather Statement in effect:**

- **South Slopes of the Western Brooks Range; Noatak Valley; Kivalina and Red Dog Dock; Lower Kobuk Valley; Baldwin Peninsula; Upper Kobuk Valleys; Southern Seward Peninsula Coast; Interior Seward Peninsula; Eastern Norton Sound and Nulato Hills; Yukon Delta Coast; Lower Yukon River; Lower Koyukuk Valley; Middle Yukon Valley; Lower Yukon and Innoko Valleys-** additional periods of rain and snow.

### Winter Storm Watch in effect:

- **Upper Tanana Valley; Delta Junction**-from Sunday afternoon through Tuesday afternoon.
- **Northern Denali Borough; Southern Denali Borough; Eastern Alaska Range North of Trims Camp; Eastern Alaska Range South of Trims Camp**-from Sunday afternoon through Tuesday afternoon.

### Winter Weather Advisory:

- **Western Arctic Coast**- 10pm this evening to 10 am Saturday
- **St Lawrence Island** -noon today to 10pm this evening
- **Bering Strait Coast**-4pm this afternoon to 7am Saturday

### Dense Fog Advisory:

- **City and Borough of Yakutat, Glacier Bay**- until 10am this morning.

For more information, go to <https://www.weather.gov/arh>

### Avalanche Conditions:



**Hatcher Pass** – Moderate above 3500', Low elsewhere

**Chugach State Park** – Considerable above 2500' Moderate below 2500'.

**Turnagain Pass and Girdwood** – Moderate at all elevations.

**Summit Lake** – Moderate at all elevations.

**Seward and Lost Lake** – Moderate at all elevations.

**Valdez: Maritime, Intermountain, Continental** – Considerable at all levels.

For more information and the most current avalanche conditions, go to <https://alaskasnow.org>

**The Next Situation Report** will be on **April 13, 2026**. A significant change in situation or threat level will prompt an interim report. This report is posted on the internet at <https://ready.alaska.gov/sitrep>.

To register for email distribution, go to: <http://list.state.ak.us/mailman/listinfo/dhsem.situation.report>.  
Direct questions regarding this report to the SEOC at 907-428-7100 or [seoc@alaska.gov](mailto:seoc@alaska.gov)